

CERTIFIED LAND CORNER RECORDATION

DESCRIPTION OF CORNER EVIDENCE FOUND, AND ORIGINAL RECORD (if known)

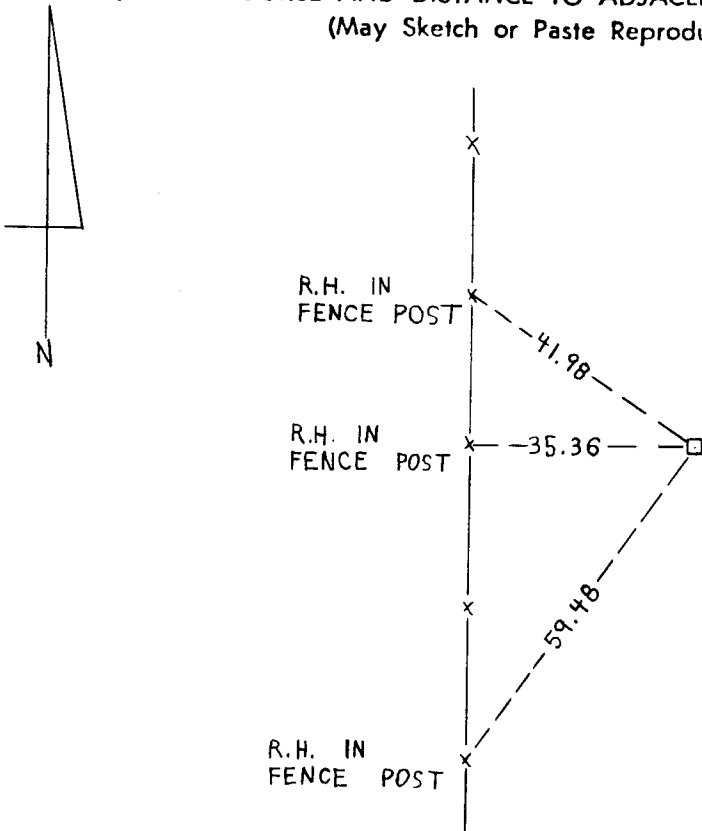
T15N
1/4 23 | 24
R69W

FOUND RED GRANITE STONE, 12"x10"x6", FIRMLY SET 6" IN GROUND.
PLAINLY MARKED 1/4 ON WEST FACE.

DESCRIPTION OF MONUMENT AND ACCESSORIES ESTABLISHED TO PERPETUATE THE ORIGINAL LOCATION OF THIS CORNER:

SET 1/2" REBAR ALONG SIDE

SKETCH, WITH COURSE AND DISTANCE TO ADJACENT CORNER IF DETERMINED IN THIS SURVEY.
(May Sketch or Paste Reproduction on Reverse Side.)



I, JOHN A. STEIL certify that I have carefully performed or reviewed the work done on the diagrammed corner as reported on this recordation form and approve the same.

John A. Steil
Signature of Surveyor

2500
Registration No.

STATE OF WYOMING,
Office of Clerk and Recorder,
County of Sarassee

This "corner record" was filed for record on the _____ day of JAN 7 1982, 19____, was noted on the cross-index plat and is assigned page No. _____, in book No. _____.

Janet C Whitehead
County Official

Cross Index No.	<u>P-21</u>	T. <u>15</u>	R. <u>69</u>	Mer.
_____	_____	T. _____	R. _____	Mer.
_____	_____	T. _____	R. _____	Mer.
_____	_____	T. _____	R. _____	Mer.
_____	_____	T. _____	R. _____	Mer.
_____	_____	T. _____	R. _____	Mer.
_____	_____	T. _____	R. _____	Mer.

P21 15-69